

Data Sheet

USB Evaluation Cable Interface Board for EPSON IMU/Accelerometer

■ OVERVIEW

This IMU/ Accelerometer USB evaluation Cable Interface board is used to control EPSON IMU and Accelerometer from PC by way of USB. The preliminary evaluation of our IMU/ Accelerometer is facilitated by using this IMU/ Accelerometer USB evaluation Cable Interface board.

■ BLOCK DIAGRAM

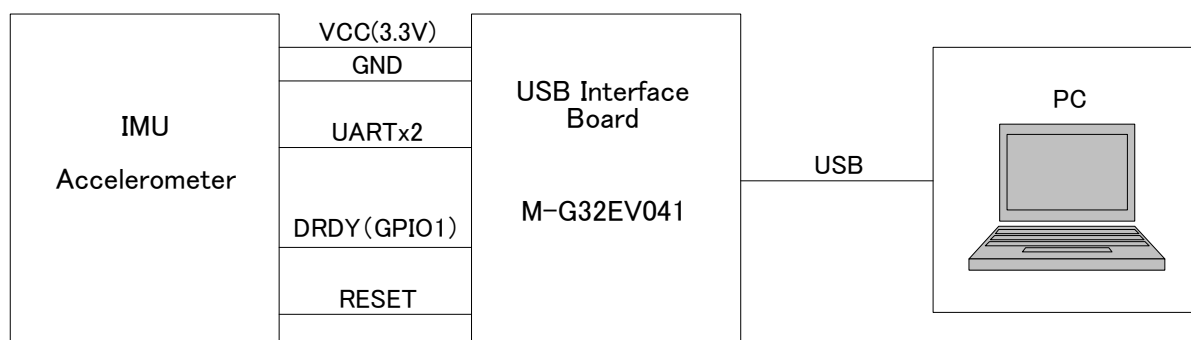


Fig1. Block Diagram

■ RECOMMENDED OPERATING CONDITION

Microsoft Windows 10/11 (64bit) are supported when the USB interface of the USB Evaluation Cable is connected to the PC. Other hardware connection or software environments are not tested by Epson.

Table1. Recommended Operating Condition

Support OS	Windows 10/11 (64bit)
USB Specification	1.1 / 2.0
Operation Temperature	-20~+70°C

OUTLINE DIMENSIONS AND PIN LAYOUT

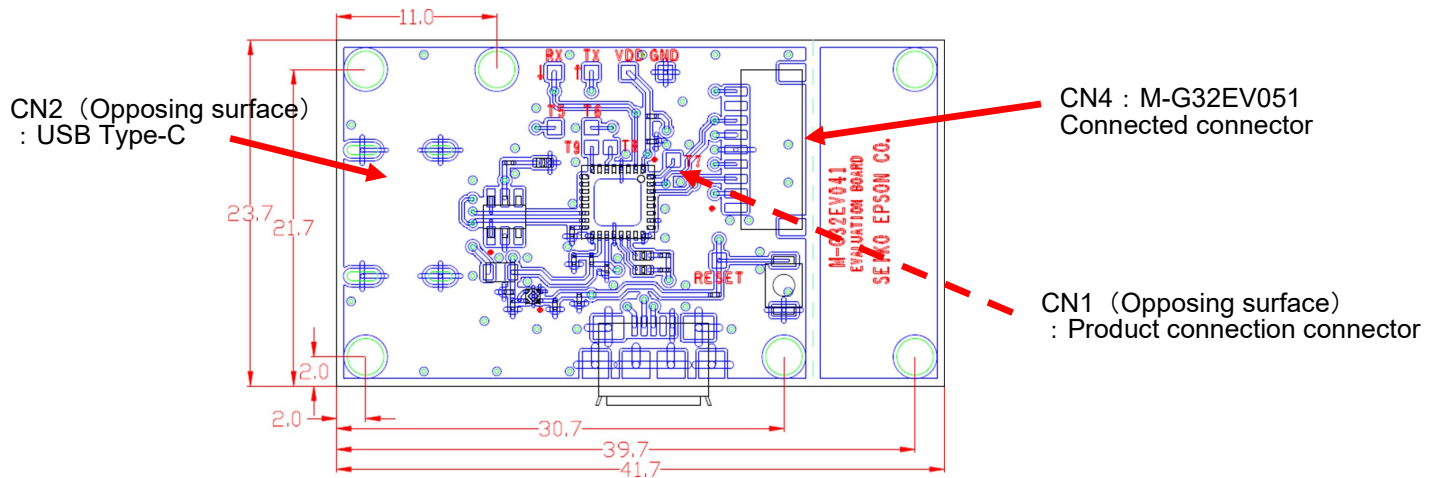


Fig2. Board Outline Dimensions (millimeters)

PIN FUNCTION

Table2. CN1 Pin Function Description

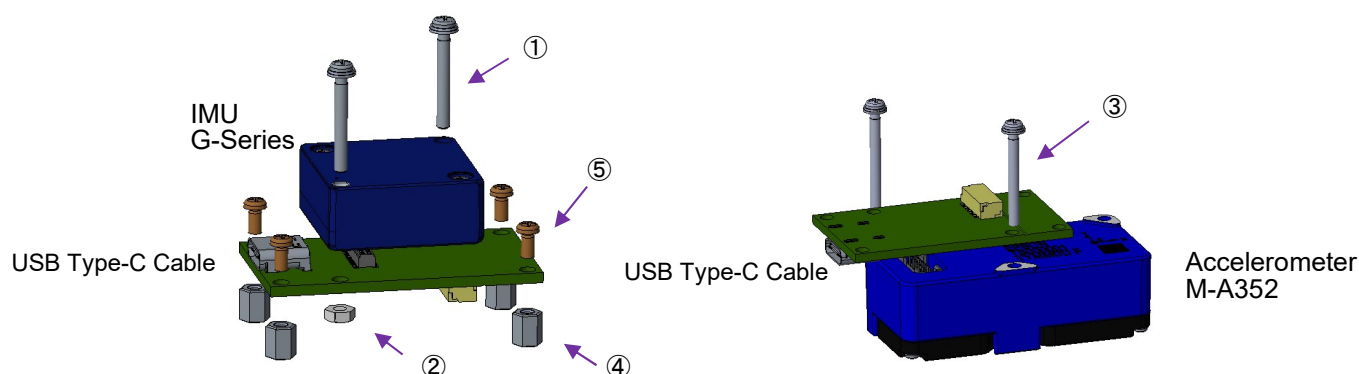
Pin No.	Mnemonic	Type ^{*1}	Description
1	SCLK	I	SPI Serial Clock
2	SDO	O	SPI Data Output
5	SDI	I	SPI Data Input
6	/CS	I	SPI Chip Select
7	SOUT	O	UART Data Output
9	SIN	I	UART Data Input
13	DRDY (GPIO1)	I/O	Data Ready (General Purpose I/O1)
16	/RST	I	Reset
10,11,12	VCC	S	Power Supply 3.3V
3,4,8,15	GND	S	Ground
14,17,18,19,20	NC		Do Not Connect

*) Please refer to the product-specific documentation about details of each terminal.

Table3. CN4 Pin Function Description

Pin No.	Mnemonic	Type ^{*1}	Description
1	NC		Do Not Connect
2	DRDY (GPIO1)	I/O	Data Ready (General Purpose I/O1)
3	SIN	I	UART Data Input
4	SOUT	O	UART Data Output
5	GND	S	Ground
6	VCC	S	Power Supply 3.3V
7	NC		Do Not Connect
8	NC		Do Not Connect
9	/RST	I	Reset

■ INSTALLATION INSTRUCTION



(1) IMU-G-Series—USB evaluation board connection (2) Accelerometer—USB evaluation board connection

Fig3. IMU/ Accelerometer Installation

■ BUNDLED PARTS

Table4. Bundled Parts List

Product Number	Product Name	Specifications	Quantity
①	Sems Screw for IMU	M2 L=16mm	2
②	Nut	Hex Nut M2	2
③	Sems Screw for Accelerometer	M2 L=25mm	3
④	Spacer	M2 L=5mm	4
⑤	Screw	M2 L=4mm	4

■ SOFTWARE REQUIREMENT

FTDI Driver

If the driver software (USB Serial Converter, USB Serial Port (COMx)) is requested when the USB Evaluation Cable is connected, install the driver using either of the following two methods.

- Update the driver via Windows Device Manager. (Automatic Update over the Internet is recommended.)
- Access the FTDI website (<http://www.ftdichip.com/Drivers/VCP.htm>) and download the appropriate driver for the OS.

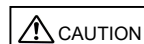
■ IMU LOGGER SOFTWARE

The IMU logger software is provided for use with the USB Evaluation Cable and USB Evaluation Cable Interface Boards to allow easy evaluation of the Epson IMUs. For information about the IMU logger software, contact our representatives.

Contact Website:

https://global.epson.com/products_and_drivers/sensing_system/contact/

IMPORTANT NOTES OF USE



- Please read the caution sheet that is bundled before use.
- This “USB Evaluation Cable Interface Board” communicates with IMU/ Accelerometer through the USB Cable(Type-C). Please refer to the list in the ‘Supported Devices’ section to determine the supported IMU/ Accelerometer model.
- Please ensure that the IMU/ Accelerometer & USB Evaluation Cable Interface Board is properly connected before inserting or removing the USB cable.
- Do not insert or remove the USB cable immediately after connecting.
- The IMU/ Accelerometer & USB Evaluation Cable Interface Board can be easily moved by the USB cable resulting in possible damage by the impact. Please take precaution to prevent impact by restraining the IMU/ Accelerometer & USB Evaluation Cable Interface Board.
- When removing the IMU/ Accelerometer from USB Evaluation Cable Interface Board, do not remove the IMU/ Accelerometer casing assembly bonded-screws. Removing the IMU/ Accelerometer casing assembly bonded-screws will void the product warranty.

PRODUCT NUMBER AND ORDER INFORMATION

Please order using the following number.

Order Number	Product Number	Comment
X2H000021000200	M-G32EV041	USB Evaluation Cable Interface Board

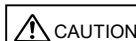
SEIKO EPSON CORPORATION

https://global.epson.com/products_and_drivers/sensing_system/contact/

MD SALES & MARKETING DEPT.

Revised Data May, 2025
In Japan

Evaluation board/kit and Development tool important notice



1. This evaluation board/kit or development tool is designed for use for engineering evaluation, demonstration, or development purposes only. Do not use it for other purposes. It is not intended to meet the requirements of design for finished products.
2. This evaluation board/kit or development tool is intended for use by an electronic engineer and is not a consumer product. The user should use it properly and in a safe manner. Seiko Epson does not assume any responsibility or liability of any kind of damage and/or fire caused by the use of it. The user should cease to use it when any abnormal issue occurs even during proper and safe use.
3. The part used for this evaluation board/kit or development tool may be changed without any notice.

NOTICE : PLEASE READ CAREFULLY BELOW BEFORE USE THIS DOCUMENT

The content of this document is subject to change without notice.

1. This document may not be copied, reproduced, or used for any other purposes, in whole or in part, without the consent of Seiko Epson Corporation ("Epson").
2. Before purchasing or using Epson products, please contact with our sales representative for the latest information and be always sure to check the latest information published on Epson's official web sites and sources.
3. Information provided in this document such as application circuits, programs, usage, etc., are for reference purpose only. Please use the application circuits, programs, usage, etc. in the design of your equipment or systems at your own responsibility. Epson makes no guarantees against any infringements or damages to any third parties' intellectual property rights or any other rights resulting from the information. This document does not grant you any licenses, intellectual property rights or any other rights with respect to Epson products owned by Epson or any third parties.
4. Epson is committed to constantly improving quality and reliability, but semiconductor products in general are subject to malfunction and failure. In using Epson products, you shall be responsible for safe design in your products; your hardware, software and systems are designed enough to prevent any harm or damages to life, health or property even if any malfunction or failure might be caused by Epson products. In designing of your products with using Epson products, please be sure to check and comply with the latest information regarding Epson products (this document, specifications, data sheets, manuals, Epson's web site, etc.). When using the information included in the above materials such as product data, chart, technical contents, programs, algorithms and application circuit examples, you shall evaluate your products both in stand-alone basis and within your overall systems. You shall be solely responsible for deciding whether or not to adopt and use Epson products.
5. Epson has prepared this document and programs provided in this document carefully to be accurate and dependable, but Epson does not guarantee that the information and the programs are always accurate and complete. Epson assumes no responsibility for any damages which you incurred by due to misinformation in this document and the programs.
6. No dismantling, analysis, reverse engineering, modification, alteration, adaptation, reproduction, etc., of Epson products is allowed.
7. Epson products have been designed, developed and manufactured to be used in general electronic applications (office equipment, communications equipment, measuring instruments, home electronics, etc.) and applications individually listed in this document ("General Purpose"). Epson products are NOT intended for any use beyond the General Purpose that requires particular/higher quality or reliability in order to refrain from causing any malfunction or failure leading to harm to life, health or serious property damage or severe impact on society, including, but not limited to listed below. Therefore, you are advised to use Epson products only for the General Purpose. Should you desire to buy and use Epson products for the particular purpose other than the General Purpose, Epson makes no warranty and disclaims with respect to Epson products, whether express or implied, including without limitation any implied warranty of merchantability or fitness for any particular purpose.

【Particular purpose】

- Space equipment (artificial satellites, rockets, etc.)
 - Transportation vehicles and their control equipment (automobiles, aircraft, trains, ships, etc.)
 - Medical equipment (other than applications individually listed in this document) / Relay equipment to be placed on sea floor
 - Power station control equipment / Disaster or crime prevention equipment / Traffic control equipment / Financial equipment
 - Other applications requiring similar levels of reliability as the above
8. Epson products listed in this document and our associated technologies shall not be used in any equipment or systems that laws and regulations in Japan or any other countries prohibit to manufacture, use or sell. Furthermore, Epson products and our associated technologies shall not be used for developing military weapons of mass destruction, military purpose use, or any other military applications. If exporting Epson products or our associated technologies, you shall comply with the Foreign Exchange and Foreign Trade Control Act in Japan, Export Administration Regulations in the U.S.A (EAR) and other export-related laws and regulations in Japan and any other countries and follow the required procedures as provided by the relevant laws and regulations.
 9. Epson assumes no responsibility for any damages (whether direct or indirect) caused by or in relation with your non-compliance with the terms and conditions in this document.
 10. Epson assumes no responsibility for any damages (whether direct or indirect) incurred by any third party that you assign, transfer, loan, etc., Epson products.
 11. For more details or other concerns about this document, please contact our sales representative.
 12. Company names and product names listed in this document are trademarks or registered trademarks of their respective companies.

2022.08

© Seiko Epson Corporation 2025, All rights reserved.